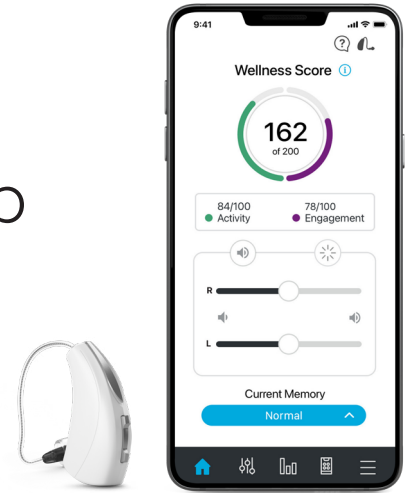


## QUICKTIP

# Thrive Hearing Control App Setup Android Version



## Downloading the Thrive Hearing Control Application

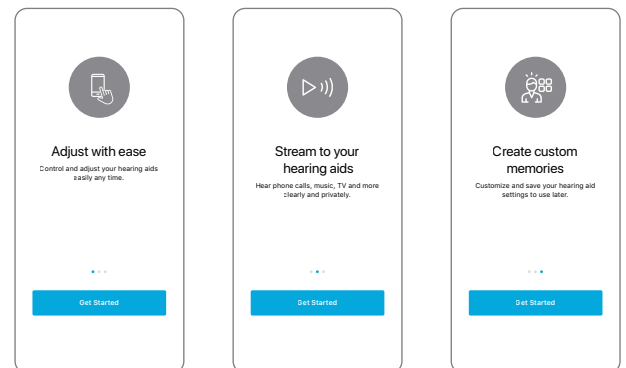
You must have a Google Play Store account to download the Thrive Hearing Control app. A Google Play store account can be created by going to **Settings > Accounts**. Choose an existing account or select **Add Account** to create a new account.

- 1 Once a Google Play Store account is set up, open the Play Store.
- 2 Search for the Thrive Hearing Control app.
- 3 Select **Install**.



## Thrive Hearing Control App Initial Setup

When the Thrive app is opened for the first time, on-boarding screens provide the user with information on app functionality. Tap on **Get Started** to begin the app setup process.

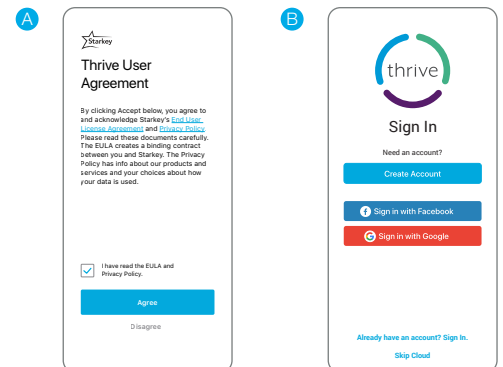


### Thrive User Agreement **A**

Review and then check the box to acknowledge the Thrive User Agreement. Tap **Agree** to continue.

### Cloud Sign-In **B**

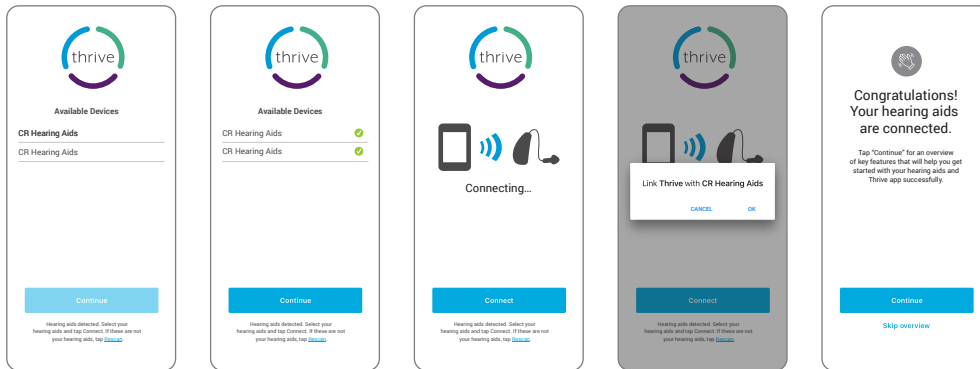
Sign in using Facebook, Google or create an account with an email address and password. Cloud Connectivity allows for TeleHear, Fall Alert and for app/hearing aid information to be backed up and restored. If Skip Cloud is selected, sign-in can occur later by going to the Thrive app **Settings > TeleHear > Sign In**.



# Thrive Hearing Control App Initial Setup (Continued)

## Connecting the Hearing Aids C

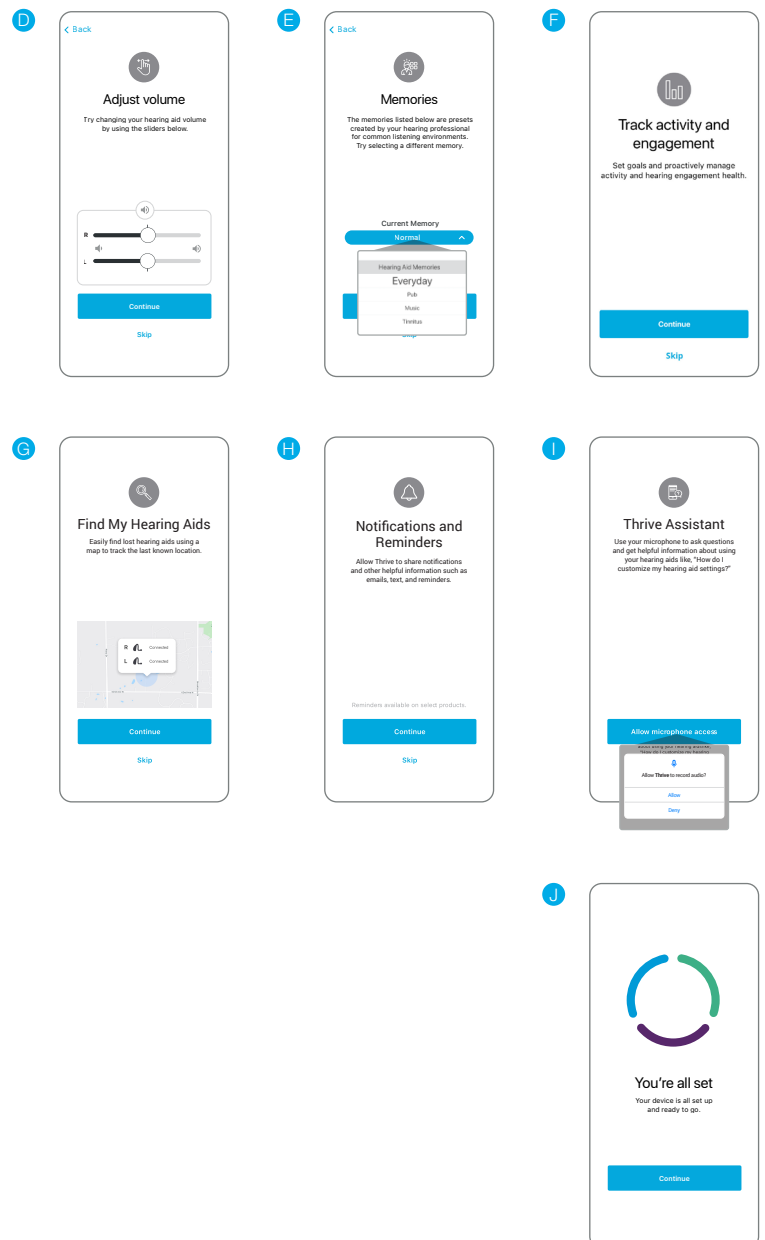
The Thrive app will search for and pair to the hearing aids. A prompt will inform the user that location permission is required. Tap **Ok**. Then select **Allow**. Once the app finds the hearing aids they will display on the screen. Tap each hearing aid to select them. Then tap **Connect**. When prompted, select **Ok** to connect to the hearing aids.



## Thrive Function Overview

An overview of the Thrive app functions provides quick information and practice of commonly used adjustments and features. Users can elect to skip the information or set up screens by selecting **Skip**.

- D **Volume Control:** Users can experiment with adjusting hearing aid volume control. Tap **Continue** to proceed.
- E **Memory Selection:** Users can experiment with changing memories. Tap **Continue** to proceed.
- F **Engagement and Activity Tracking:** Tap **Continue** to proceed.
- G **Find My Hearing Aids:** Tap **Continue** to proceed.
- H **Notifications and Reminders:** Tap **Continue** to proceed.
- I **Thrive Assistant:** In order to use Thrive Assistant, users must allow the Thrive app to access the smartphone microphone. When prompted to allow the app to record audio, select **Allow**.
- J **You're All Set**  
Tap **Continue** to enter the Thrive app.





## Device Settings

Advanced settings for the hearing aids can be turned on/off or set in this menu.

**About My Devices:** Displays the model, technology level and serial numbers of the hearing aids as well as the current firmware version.



**Alerts:** Turning on Alerts allows an indicator to be played in the hearing aids when receiving a phone call. Press the blue button to preview the alerts.

**Tap Gesture:** Turn the tap gesture on or off. Double Tap feature controls Accessory Start/ Stop Stream, Edge Mode and Thrive Assistant. Set preferred functionality for the right and left hearing aids by tapping the pencil icon . Set the tap sensitivity to **Less**, **Default** or **More**. Available for AI hearing aids only.

**Car:** Turn Automatic Car on or off. Tap **OK** to allow access to the phone's motion sensor to provide automatic memory changes when in a vehicle achieving a speed of 10 miles per hour or greater. Set which memory the Automatic Car mode uses by clicking the  and selecting the preferred memory.

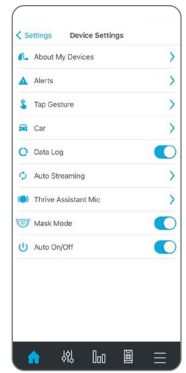
**Data Log:** Turn Data Log on or off. Turning Data Log off eliminates the ability to generate an Engagement Score.

**Auto Streaming:** Turn Auto Streaming on or off. Auto Streaming is on by default following programming in Inspire X. Auto Streaming will use Stream Boost by default. If Auto Streaming is turned off, the memory will not change when streaming.

- **Phone Call:** Select which memory the Automatic Phone mode uses by clicking on the  and selecting the preferred memory. Also select how the hearing aid microphones will perform during phone call streaming. Tap **No Change**, **Decrease** (50%) or **Mute** to indicate microphone preference.
- **Media Audio:** Select which memory the automatic media streaming mode uses by clicking on the  and selecting the preferred memory. Also select how the hearing aid microphones will perform during media streaming. Tap **No Change**, **Decrease** (50%) or **Mute** to indicate microphone preference.

**Auto On/Off:** Tap the slider to deactivate/activate Auto On/Off. Auto On/Off allows the hearing aids to automatically go into low power mode when not in use. Available for AI hearing aids only.

**Thrive Assistant Mic:** Tap **HA Mic** or **Phone Mic** to select preference for which mic is used by Thrive Assistant. HA Mic is the default setting.



## Wellness Score Setup

Set activity tracking information to ensure the most accurate calculations of the Wellness Score.

- Activity Tracking: Customize activity score goals including Steps, Exercise and Stand. Information can be modified at any time by going to the **Settings > Wellness Score > Activity Tracking**.

**NOTE:** Direct streaming compatible with certain Android devices only. For all other Android smartphone models, hearing aids and the 2.4 GHz Remote Microphone + work together to deliver hands-free phone conversations with binaural streaming. Audio such as music, movies, GPS directions, and more can also stream through the Remote Microphone + directly to the hearing aids. For more information, see the Remote Microphone + QuickTIP.