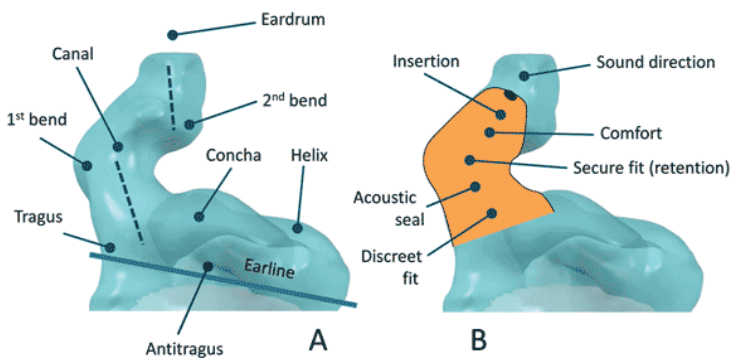


# Impression Inspection Checklist

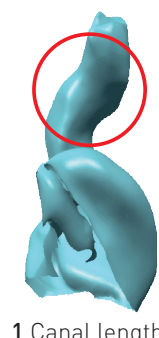


## Overall quality of Impression

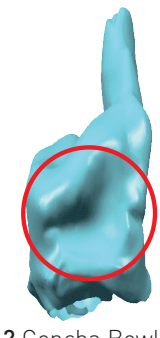


## INSPECT IMPRESSION

- Canal length (Image 1)
  - long enough to determine sound direction
  - IIC or CIC- canal at 2nd bend
- Full concha bowl (Image 2)
  - Shallow concha bowl may not be ITC R candidate
- Full helix (Image 3)
- No voids
- No narrow aperture
- Sharp bend in ear canal
  - May not be IIC or CIC candidate



1 Canal length



2 Concha Bowl



3 Helix

## PATIENT DISCUSSION – TRADE-OFFS

Each time you increase the receiver strength, you may force an increase in the size of the final product. What are the user's priorities?

- Cosmetics
- Wireless connectivity
- High gain requirements
- Dexterity concerns
- Telecoil needs (only available in ITE)

