

## QUICKTIP

# Sound Manager

Sound Manager features are technology-tier and style dependent. Higher levels of technology provide more options and assistance for the patient. Default values are research driven based on patient performance and preference. Sound Manager allows for adjustments to Sound Enhancement, Situational Sound Management and Directionality on a per-memory basis. Launch Inspire X, then connect and detect hearing aids and select Sound Manager on the left navigation bar.

*Reference the Initial Fit Protocol QuickTIPs for more information.*

## Sound Enhancement

### Speech in Loud Noise

Binaural noise management feature designed to specifically reduce dynamic background noise (e.g. speech babble) providing better clarity through selective identification and enhancement of speech while preserving spatial cues.

### Speech in Noise

Fast-acting noise management and speech preservation system designed to provide comfort in speech in noise situations and reduced listening effort.

### Quiet

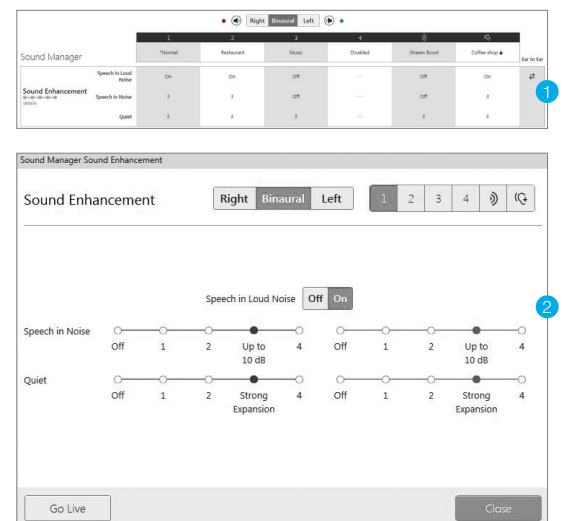
Expansion algorithm designed to provide comfort for low-level noise.

### There are two ways to adjust the Sound Enhancement controls:

- 1 Select the **Setting Value** on the adjustment table. The control will turn blue. Select the up or down arrows to increase or decrease the amount of noise control.

OR

- 2 Select **Details** adjacent to Sound Enhancement. Select a higher radio button for more noise control or a lower radio button for less noise control.



# Situational Sound Management

## Transients

Transient Noise Reduction is a fast-acting noise reduction algorithm designed to quickly attenuate transient acoustic signals without distorting other important environmental or speech sounds.

## Wind

Noise reduction algorithm designed to provide comfort for wind noise when turbulence is detected over the microphones.

## Machine

Noise reduction algorithm designed to provide comfort for loud, steady state noise.

## Auto Music

Hearing aids will automatically adjust their settings to provide an optimal music listening experience when music is detected in the environment. Auto Music defaults ON in Normal, Streaming, Stream Boost, and Auditorium memories. It can be manually enabled in other memories (except for the dedicated Music memory).

**NOTE:** Use of the Music memory is recommended for dedicated music listening.

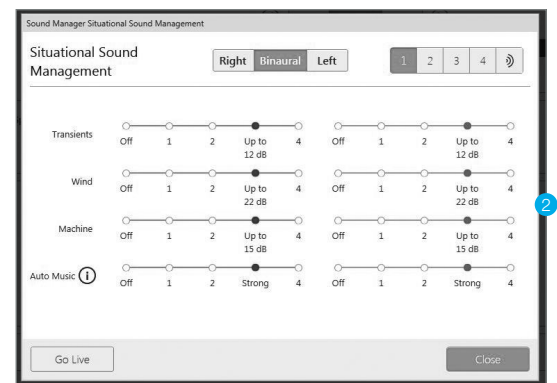
[Reference the Music Memory QuickTIP for additional information.](#)

## There are two ways to adjust Situational Sound Management controls:

- 1 Select the **Setting Value** on the adjustment table.  
The control will turn blue. Select the up or down arrows to make music signals more or less robust, select the up or down arrows to increase or decrease the amount of Transients, Wind or Machine Noise control.

OR

- 2 Select **Details** adjacent to Situational Sound Management. Select a higher radio button to increase the amount of Transients, Wind or Machine Noise control or a lower radio button to decrease the amount. Select a higher radio button or a lower radio button to make music signals more or less robust.



# Directionality

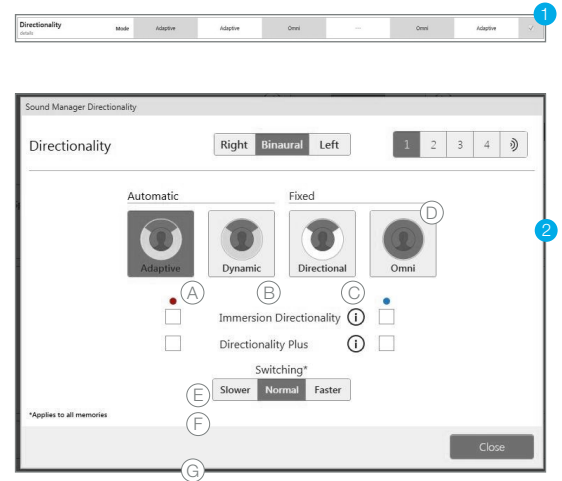
The optimal microphone mode will be determined as a function of the chosen memory environment. It is recommended to leave the directionality mode at the default settings in most situations. Professional flexibility is provided for adjusting the microphone mode and settings, as necessary.

## There are two ways to adjust the Directionality settings:

- 1 Select the **Setting Mode** on the adjustment table. The control will turn blue. Select the up or down arrows to change the mode.

OR

- 2 Select icon to change the Directionality mode. Select the check box to enable Immersion Directionality or Directionality Plus.



### (A) **Adaptive**

Automatic, adaptive null steering with Speech ID to protect speech at all angles around the listener

### (B) **Dynamic**

Automatic switching between omnidirectional and fixed directional modes based on the environment

### (C) **Directional**

Fixed directional; amplifies sound from in front of the listener more than from behind via a hypercardioid polar plot

### (D) **Omni**

Fixed response; amplifies sound from all directions equally

### (E) **Immersion Directionality**

Defaults OFF in all modes. Select the check box to activate this high frequency directional filter

### (F) **Directionality Plus**

Defaults OFF in all modes. Select the check box to activate when the hearing aid switches into a directional mode

### (G) **Switching**

Defaults to Normal in all modes. Select Slower or Faster to decrease or increase the speed of directional switching