

Rechargeable Initial Fit Protocol



Initial Setup/Charging

- 1 2.4 GHz Thrive platform Rechargeable hearing aids can only be programmed wirelessly via the 2.4 GHz or NOAHLink Wireless programmer. Hearing aids will ship with enough battery life to complete initial hearing aid programming, but not enough for a full day of use.

- 2 Place hearing aids in the charger prior to the initial fitting to ensure there is enough battery life for use.

NOTE: If the hearing aid battery charge is too low, a low battery warning will appear when reading devices. If this occurs, the fitting session can proceed, but a firmware update (if available) cannot. Fifteen minutes either in the Standard or Custom Charger or a 7-minute turbo charge using the Mini Turbo Charger is enough to proceed with a firmware update.

Get Started

- 1 Launch **Inspire X**.
- 2 On the **Get Started** screen, select **View Programmers**, then choose the 2.4 GHz wireless programmer and select **OK**.
NOTE: Expected range for wireless programming is 30 feet.
- 3 Select the **check box** next to the hearing aid(s) to be programmed.
- 4 Select **Read Device Settings** to begin a new fitting or for a follow-up fitting session using the current settings in the hearing aids. Select **Load a Previous Session** to retrieve a previously saved session.
- 5 Select **Start**.



Initial Fit and Auto Path

Initial Fit launches automatically when programming new hearing aids.

- 1 Select the appropriate **Acoustic Options**, then select **OK**.
- 2 Select the appropriate **Experience with Amplification**.
[Fig. 1]

Refer to the Experience Manager QuickTIP for additional information.

- 3 Insert hearing aids into the patient's ears, reduce all sources of noise, then select **Begin** to run the Auto Path.

NOTE: *If hearing aid programming is conducted prior to the fitting appointment, re-run the Feedback Cancellor with the hearing aids in the patient's ears.*

- 4 Review the Auto Path results screen. Select **Restart** if status is incomplete for any steps, or select **Close** to continue.

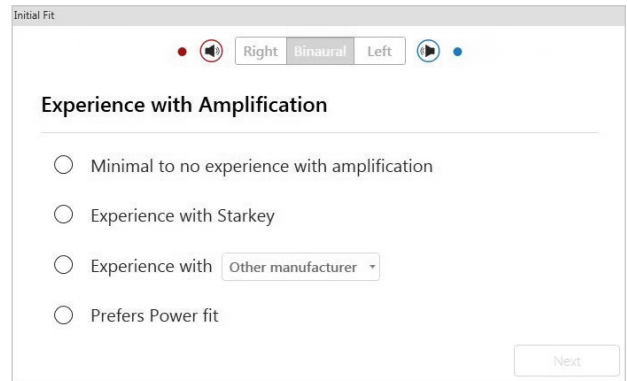


Figure 1

User Controls

The User Control Configuration demo box will appear upon initial programming. Select **Show Demo** for demonstration of user control configuration options, or select **Don't show again** and **Close**.

- 1 Drag any user control you wish to enable from the left and drop it on a gesture on the right. User control options include: Hearing Aid Volume, Memory, Tinnitus Level, Mute, Accessory Start/Stop, Accessory Volume, Manual Alert, Power Off, Thrive Assistant, and Edge Mode. Gesture options include: Short Press, Push & Hold, Power Off, Double Tap, Thrive Assistant, and Edge Mode. [Fig. 2]
- 2 Rechargeable hearing aids do not have battery doors. To provide patients with the ability to power off their Rechargeable hearing aid(s) while not in use, the Push & Hold user control can be configured to function as a "Power Off" option.
- 3 Rechargeable hearing aid(s) will ship with the "Power Off" user control in the Push & Hold position.

NOTE:

- *There is no "Ear-to-Ear" user control syncing for the Power Off option.*
- *Thrive Assistant, Manual Alert and Edge Mode are only available for Edge AI products.*
- *Double Tap gesture is only available for AI products.*
- *An alert icon will appear if the tinnitus user control is enabled but the tinnitus stimulus is disabled.*

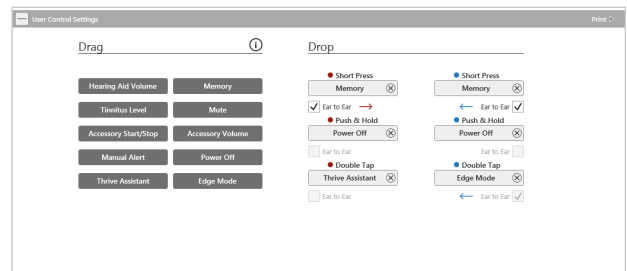


Figure 2

QuickFit and Fine Tuning

- 1 Select **QuickFit** on the left navigation bar to make global fitting adjustments. [Fig. 3]
- 2 Select the **Memory drop-down arrows** on the memory bar to program memories.
- 3 Select **Fine Tuning** on the left navigation bar or from the bottom of the QuickFit screen to make detailed fitting adjustments of individual channels and input levels.
- 4 Select **Tables** or **Sliders** to choose desired view for adjustments.
- 5 Select **+** to expand Low, Mid, High and/or Ultra channel groups.
- 6 Select **channels and input levels** to adjust, then select up and/or down arrows to make adjustments.

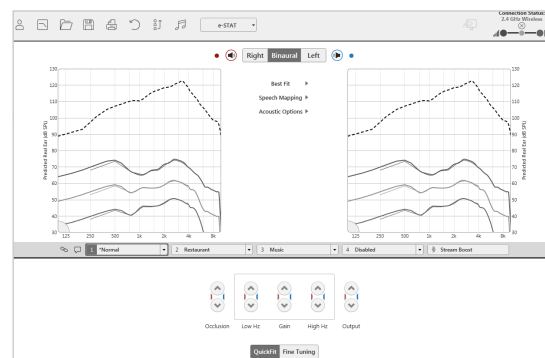


Figure 3

Patient Tools

Select **Patient Tools** from the left navigation bar then select Self Check. Place hearing aids on a flat surface with the receiver facing up. Reduce all sources of noise. Click **Set Baseline** to begin. A brief, robust stimulus will play in each hearing aid. A green check mark for each component indicates the baseline was established.

Select **Remote Programming** under Patient Tools to enable remote programming. Click the **Check Box** next to Remote Programming. Then click **Accept** after reviewing the disclosure notice with your patient. Next, click the code generator icon to generate a unique code for your patient to enter into their Thrive Hearing Control app to allow access for Remote Programming. [Fig. 4]

Select **Auto Fall Alert** under Patient Tools to change the Fall Detection Sensitivity and complete the Fall Risk Screening with your patient. Please refer to the Fall Alert QuickTIPs for full instructions on completing setup and use. Please note Auto Fall Alert is only available for Edge AI hearing aids. [Fig. 5]

Please refer to the Self Check QuickTIP for additional information.

NOTE: A baseline will be automatically established for Edge AI devices. For all other devices, a baseline must be established by the hearing professional within the Inspire software.

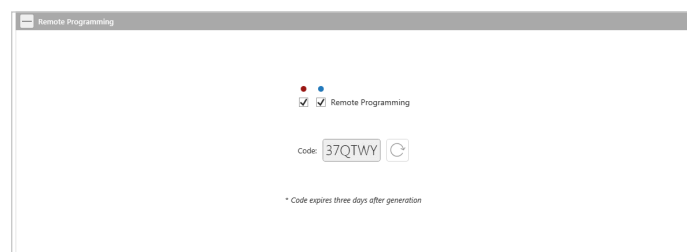


Figure 4

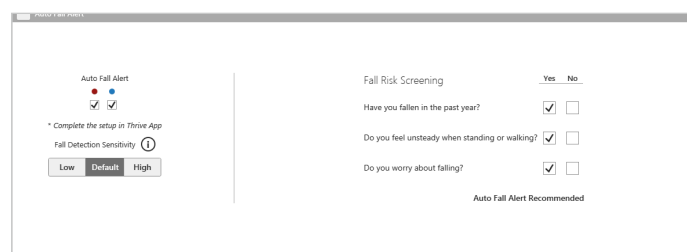


Figure 5

Additional Adjustments

Refer to the QuickTIP library for information on various features, such as Sound Manager, Tinnitus and Frequency Lowering.

Memories and Speech Indicators

Select **Memories** on left navigation bar or select **Memories** from the middle of all fitting screens.

- 1 Select drop-down arrows to extend the **Memories** menu, then select the desired memories to program.
- 2 If configuring a **Music Memory**, refer to the Music Memory QuickTIP.
- 3 **Speech Indicators** can be customized.
(see *Indicators on next page*).
- 4 The memory bar will default to a display of the selected environment (for example, “Outdoors”).
Select the **speech bubble** to change the display to the speech indicator that has been configured (for example, the Outdoors memory will display as “Golf”). [Fig. 6]

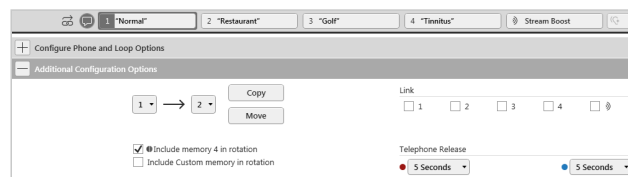


Figure 6

Accessories

Select **Accessories** on the left navigation bar to configure 2.4 GHz accessories. [Fig. 7] Follow pairing instructions via the information icon to pair within Inspire X. Once paired, adjust the Hearing Aid Mic While Streaming for the Streaming Accessories and the Favorite Button Configuration for the Remote.

NOTE: Because rechargeable hearing aids do not have battery doors, inserting the hearing aids into the Charger or Mini Turbo Charger and then removing them is necessary to put the hearing aids into pairing mode when pairing with accessories outside of Inspire X.

Refer to the [Starkey Hearing Technologies 2.4 GHz wireless accessories QuickTIPs](#) for additional information.

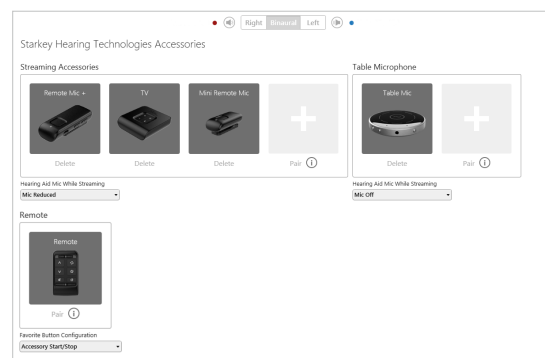


Figure 7

Indicators

Select **Indicators** on the left navigation bar.

- 1 Select or de-select check boxes to enable or disable indicators.
NOTE: Volume indicators may be enabled or disabled on an individual basis.
- 2 Select **Adjust All Indicators** to increase or decrease volume level for all Tone or Speech/Chimes indicators in 5 dB increments, or to change the voice language.
- 3 Select the **Individual Indicator** names to adjust the volume level and stimulus type for individual indicators. Select the hearing aid icon to play the indicator directly through the hearing aids or the computer icon to play the indicator through the loudspeaker for demonstration purposes.
- 4 Select **Power-Off Sound** to adjust the volume level of the descending Chimes.

Indicators (Continued)

- 5 Select **Memory/Home** to configure Speech Indicators, which are environment-specific voice indicators. As memories are enabled, the default indicator will match the selected environment (for example, the user will hear “Outdoors” when switching into the Outdoors memory). Select the drop-down arrow under **Stimulus** to change the speech indicator (for example, the user has the option to hear “Golf” when switching into the Outdoors memory). [Fig. 8]

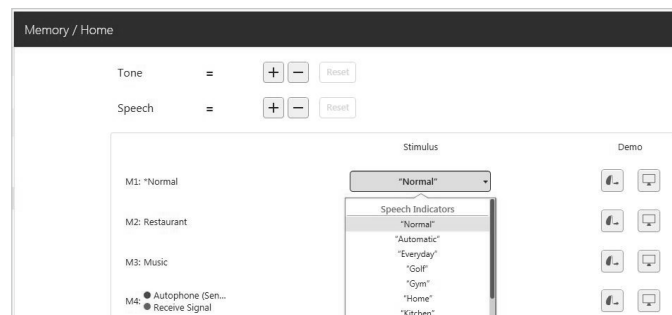


Figure 8

Fitting Summary

Select **Fitting Summary** on the left navigation bar. [Fig. 9]

Select **details** to change the status of features, if necessary. Details are hyperlinks and will navigate to the Feature Names adjustment screens.

Select the drop down for Auto On/Off under **Status** to allow the hearing aids to automatically go into sleep mode when not in use. This feature is available for AI hearing aids only.

Select **Print** to generate a Fitting Report, a Data Log Report or a personalized Device Guide that displays the volume adjustments, memories and speech indicators that have been enabled. The Device Guide can be translated into several languages from the Print screen.

	1	2	3	4	5
Memory	Normal, e-STAT	Restaurant	Outdoors	Crowd	Stream Boost
details	Frequency Lowering	Disabled	Disabled	Disabled	Disabled
details	Directionality	Adaptive	Adaptive	Adaptive	Adaptive
details	Immersion Directionality	Disabled	Disabled	Disabled	Disabled
details	Directionality Plus	Disabled	Disabled	N/A	N/A
details	Speech in Loud Noise	On	On	On	N/A
	Speech in Noise	3	3	3	N/A
	Quiet	3	3	3	3
details	Transients	3	3	3	N/A
	Wind	3	3	3	OFF
	Machine	3	3	3	OFF
	Auto Music	3	OFF	OFF	OFF
details	Therms	Disabled	Disabled	Disabled	N/A
Indicators	Status	User Controls			
Low Battery	✓	Feedback Canceler	Successful	Gesture	Right
Power-On Sound	✓	Experience Level	3	Short Press	Memory
Power-Off Sound	✓	Power-On Delay	3	Push & Hold	Power Off
Memory / Home	✓	Auto On/Off	On	Double Tap	Thrive Assistant
Hearing Aid Volume	✓	Self Check	Disabled		Edge Mode
Accessory Stream	✓	Remote Programming	Enabled		
Mute	✓	Auto Fall Alert	Enabled		
Comfort Boost	✓				
Assistant	✓				
Edge Mode	✓				
Auto Fall Alert	✓				

Figure 9

Standard Charger, Custom Charger and Mini Turbo Charger

Refer to the 2.4 GHz Charger or 2.4 GHz Mini Turbo Charger QuickTIP for additional information.



Standard Charger



Mini Turbo Charger



Custom Charger