



# STARKEY AT A GLANCE 2021

## Table Microphone

A Patient-Focused Accessory

**Judy Grobstein, Au.D.-FAAA, MACAud**

Manager of Education and Audiology



Hear better. Live better.





# Table Microphone

Enhance communication in quiet  
or noisy environments







# Table Microphone

**Eight directional microphones**  
and **beam-forming** technology  
enhances listening in challenging  
environments







Streaming time  
**up to 12 hours**



Fully charged in  
**2 hours**



Operating range  
**up to 15 meters\***

*\*Range presumes line of sight and no interference. No hard or soft partitions between hearing aids and the Table Microphone. Wireless range will vary significantly in the presence of interference.*



# Table Microphone

## Primary Use Case(s)

### Automatic Mode

Determines and follows the primary speaker in quiet or noisy backgrounds

### Manual Mode

Focus on up to 2 speakers via a tap to particular segment(s)

### Surround Mode

Listen to multiple speakers in a quiet environment





# Table Microphone

## Secondary Use Case(s)

### Remote Microphone

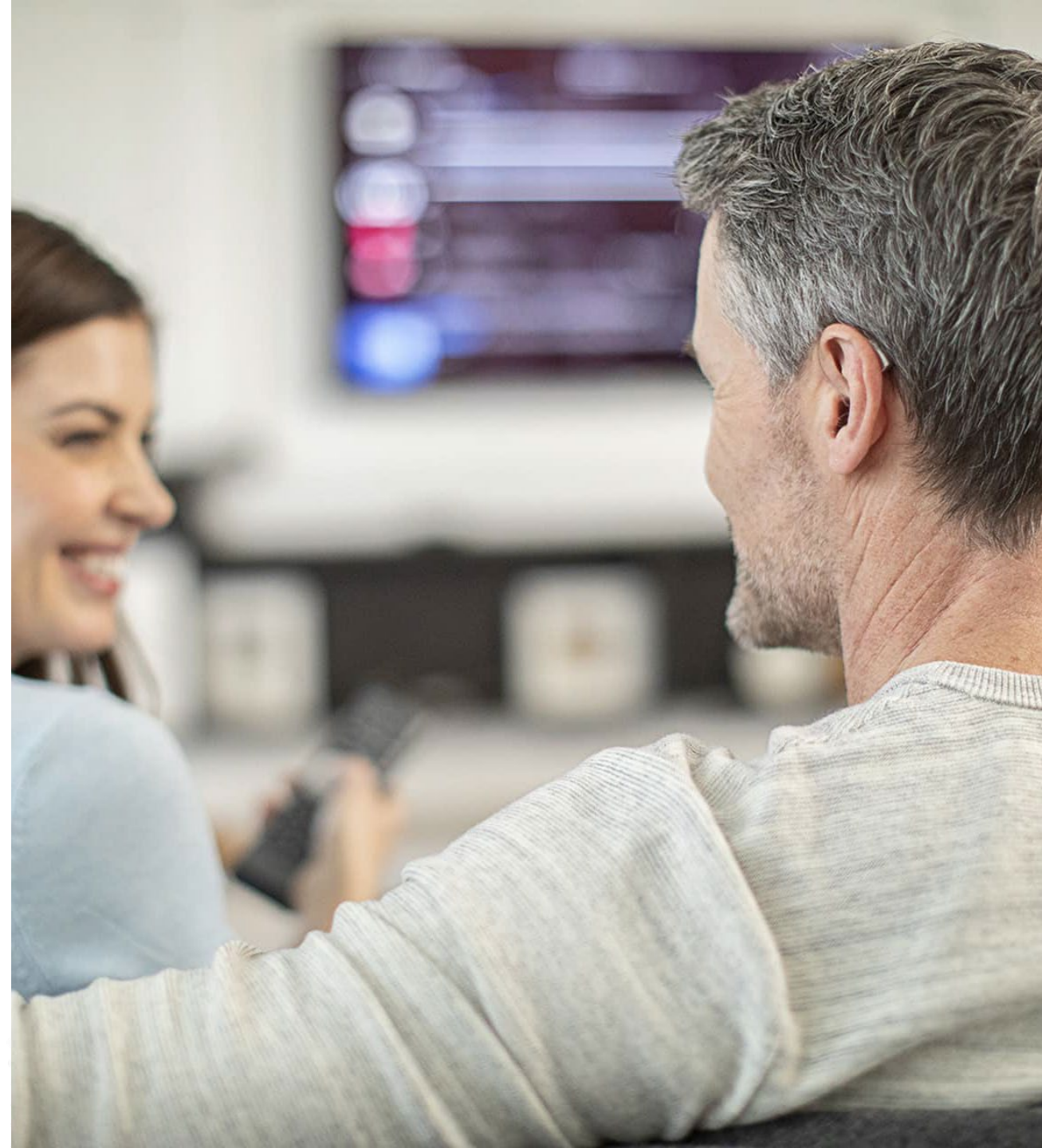
Stream voice of the person wearing the Table Microphone directly to the hearing aids

### Audio Streamer

Stream audio from any device that uses a 3.5 mm audio out jack such as TV, MP3, and more

### Wired Headphones

Benefit for non-hearing aid wearers and normal hearing individuals who desire more effortless listening in quiet or noise





# Table Microphone

## Battery Charging LED Indicators



### GREEN

Green segments indicate  
battery charge level

Blinking green segment  
indicates the current level  
during charging



### ORANGE

LED will display orange  
when less than 2 hours  
of battery life remains



### RED

LED will display red  
when less than 1 hour  
of battery life remains



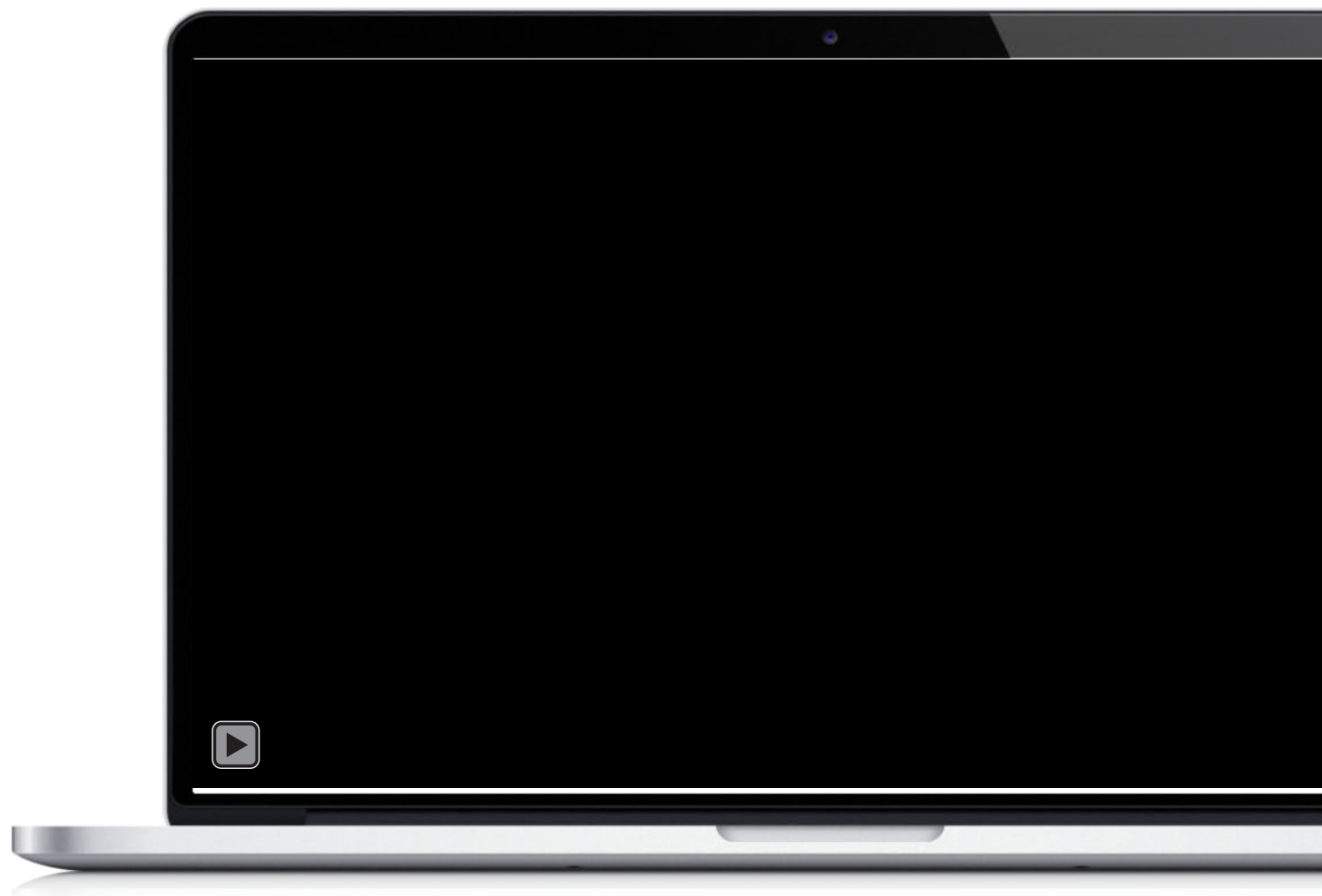




## TABLE MICROPHONE

# Pairing within Inspire

Inspire 2020.0 is required to pair the  
Table Microphone with Livio Edge AI,  
Livio AI and Livio hearing devices



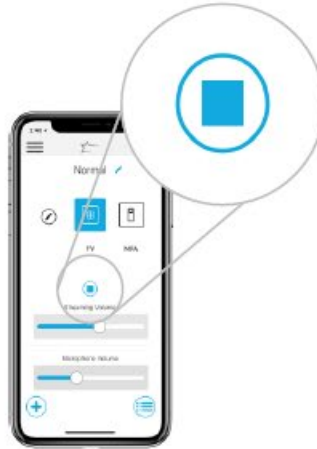


# Table Microphone

## Start/Stop Audio Streaming



Power On Table  
Microphone  
*Streaming starts in  
hearing aids automatically*



Thrive Hearing  
Control App



Hearing Aid  
User Control



2.4 GHz Remote  
via Favorite Button

# Table Microphone

## Start/Stop Audio Streaming

INSPIRE 2020.1

User Control Settings

Drag

Hearing Aid Volume

Memory

Tinnitus Level

Mute

Accessory Start/Stop

Accessory Volume

Manual Alert

Thrive Assistant

Edge Mode

Drop

Short Press

Edge Mode

✓ Ear to Ear →

Push & Hold

Hearing Aid Volume

✓ Ear to Ear →

Double Tap

Edge Mode

✓ Ear to Ear →

Short Press

Memory

← Ear to Ear ✓

Push & Hold

Accessory Volume

← Ear to Ear ✓

Double Tap

Accessory Start/Stop

← Ear to Ear ✓

Assign to **Double Tap**

A photograph of a man with a beard and glasses, wearing a dark jacket over a light-colored sweater. He is holding a smartphone in his left hand and adjusting a hearing aid on his right ear with his right hand. The background is a blurred outdoor setting with trees and sunlight.



# Table Microphone

## Audio Streaming Volume



Table Microphone  
*Via on board volume buttons*



Thrive Hearing  
Control App



Hearing Aid  
User Control



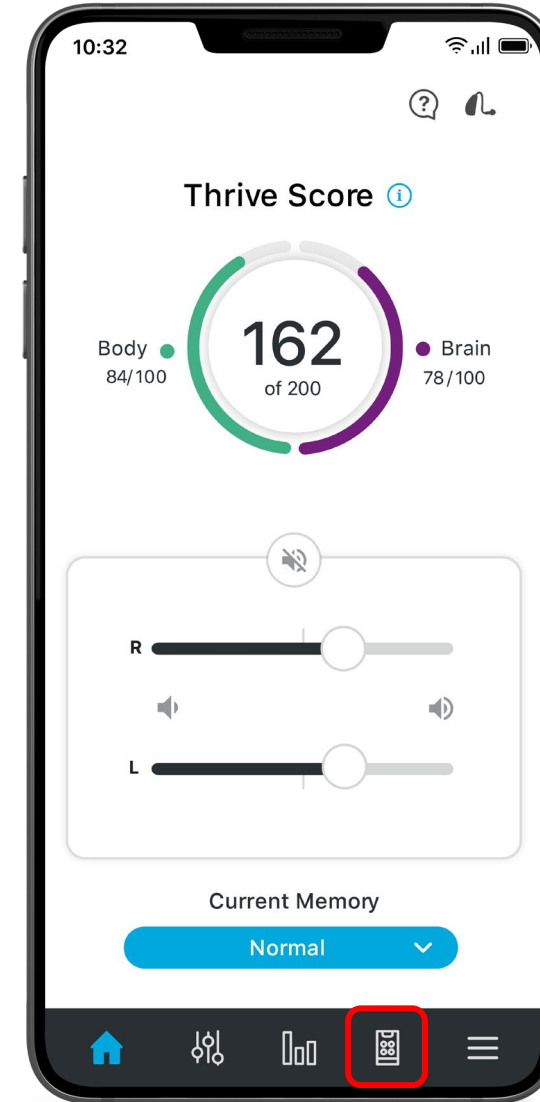
SHT 2.4 GHz Remote  
via long press of  
Volume +/- Button

# Table Microphone

## Thrive Hearing Control App

Icon will appear if at least one 2.4 GHz streaming accessory is paired to the hearing devices

- Table Mic
- Remote Microphone +
- Mini Remote Microphone
- TV Streamer





# Table Microphone

## Thrive Hearing Control App

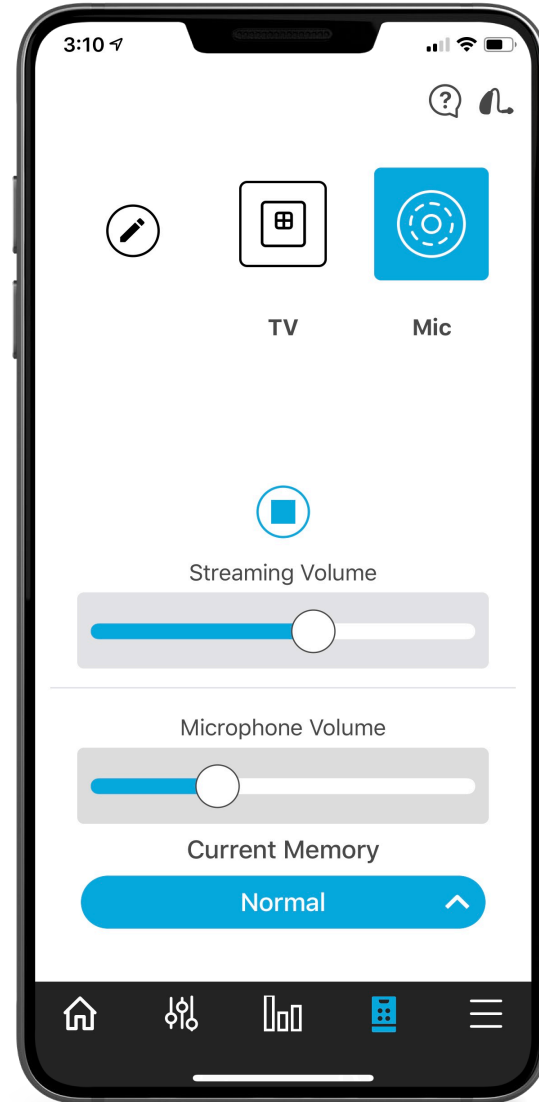
Choose which accessory to stream

Start/stop streaming

Independently adjust streaming volume  
and hearing aid microphone volume

Change memory

Name accessories  
(e.g. Living Room TV, Bedroom TV)



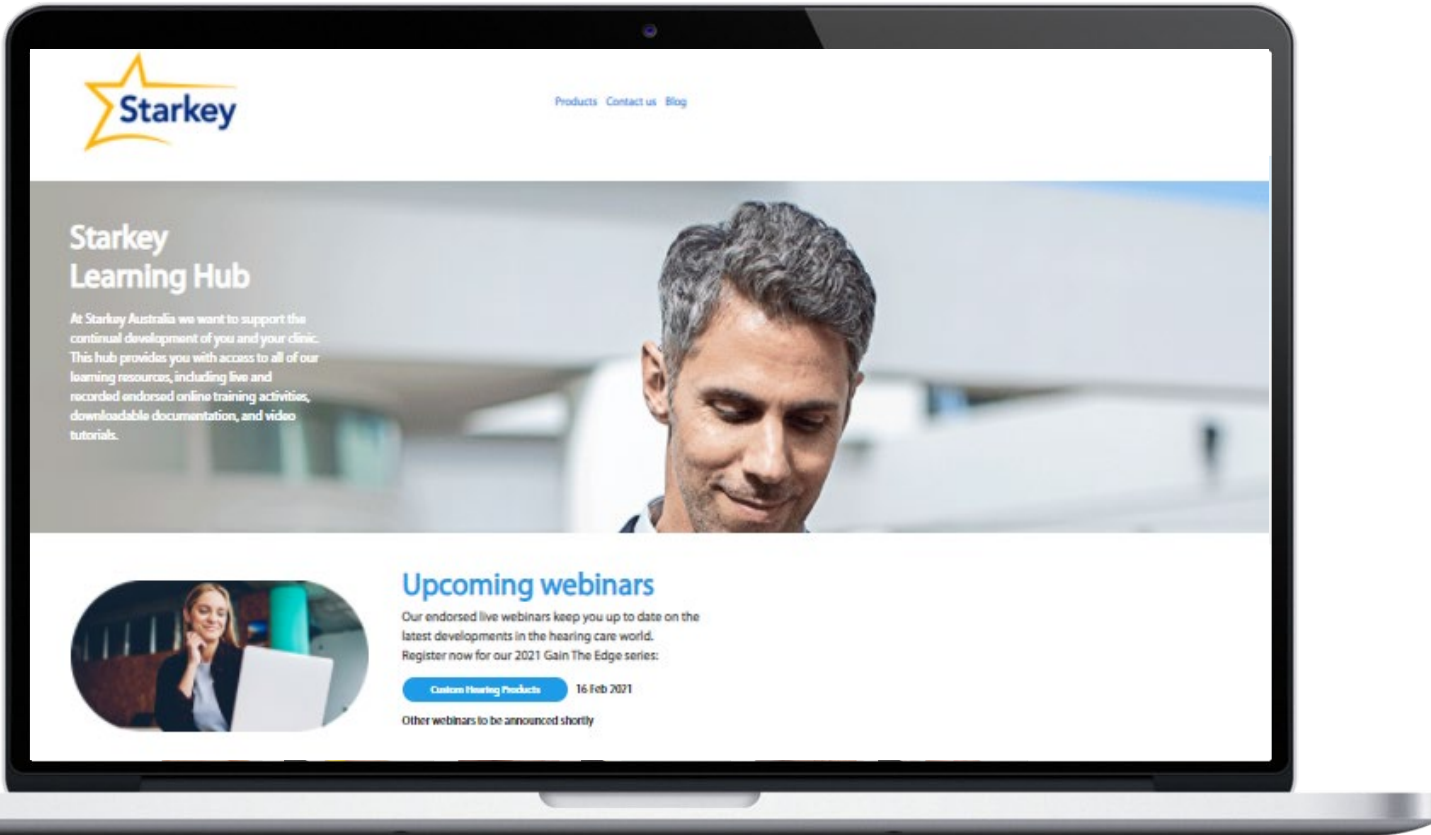
# livio Edge<sup>AI</sup>





# Resources

## Learning Hub



### 2.4 GHz Table Microphone

Kyle Walsh, PhD | Viktoriya Zakharenko, AuD

**Introduction**

The Table Microphone is a new multipurpose wireless hearing aid accessory designed to improve speech understanding in noise, such as in a meeting or restaurant. It uses an array of microphones and beamforming technology to enhance the active speaker in the environment, while simultaneously reducing competing background speech or noise from other directions.

**Who will benefit**

The Table Microphone is for any patient who struggles to hear speech in a multi-talker environment or in background noise, and who would benefit from better focus and less effort to understand their conversational partners.

**How it works**

The sophisticated beamforming technology of the Table Microphone assists the user in focusing on the intended speaker in a group. The direction of the speaker is detected automatically, or can be selected manually by the user. The enhanced signal, with clearer speech and less noise, is streamed wirelessly to the user's hearing aids.

**Why patients will want it**

Patients will want the Table Microphone as an easy-to-use solution to the problem of understanding speech in challenging listening environments. The Table Microphone allows patients to hear more of a conversation using less effort, and also provides multiple functions such as a TV streamer and a body-worn remote microphone.

**Where to find it**

The Table Microphone is compatible with all Livio Edge AI, Livio AI and Livio products, styles and technology tiers.

Livio Edge AI	Livio AI	Livio
2400	2400 2000 1400 1200	2400 2000 1400 1200 1000
✓	✓ ✓ ✓ ✓	✓ ✓ ✓ ✓ ✓

### 2.4 GHz Table Microphone

Speech enhancement tool

The Table Microphone is a wireless hearing aid accessory designed to improve speech understanding in noise, such as in a meeting or restaurant. It uses an array of microphones and beamforming technology to enhance the active speaker in the environment, while simultaneously reducing competing background speech or noise from other directions.

**Who will benefit**

The Table Microphone is for any patient who struggles to hear speech in a multi-talker environment or in background noise, and who would benefit from better focus and less effort to understand their conversational partners.

**How it works**

The sophisticated beamforming technology of the Table Microphone assists the user in focusing on the intended speaker in a group. The direction of the speaker is detected automatically, or can be selected manually by the user. The enhanced signal, with clearer speech and less noise, is streamed wirelessly to the user's hearing aids.

**Why patients will want it**

Patients will want the Table Microphone as an easy-to-use solution to the problem of understanding speech in challenging listening environments. The Table Microphone allows patients to hear more of a conversation using less effort, and also provides multiple functions such as a TV streamer and a body-worn remote microphone.

**Where to find it**

The Table Microphone is compatible with all Livio Edge AI, Livio AI and Livio products, styles and technology tiers.

Livio Edge AI	Livio AI	Livio
2400	2400 2000 1400 1200	2400 2000 1400 1200 1000
✓	✓ ✓ ✓ ✓	✓ ✓ ✓ ✓ ✓

### 2.4 GHz Table Microphone

Speech enhancement tool

The Table Microphone is a wireless hearing aid accessory designed to improve speech understanding in noise, such as in a meeting or restaurant. It uses an array of microphones and beamforming technology to enhance the active speaker in the environment, while simultaneously reducing competing background speech or noise from other directions.

**Who will benefit**

The Table Microphone is for any patient who struggles to hear speech in a multi-talker environment or in background noise, and who would benefit from better focus and less effort to understand their conversational partners.

**How it works**

The sophisticated beamforming technology of the Table Microphone assists the user in focusing on the intended speaker in a group. The direction of the speaker is detected automatically, or can be selected manually by the user. The enhanced signal, with clearer speech and less noise, is streamed wirelessly to the user's hearing aids.

**Why patients will want it**

Patients will want the Table Microphone as an easy-to-use solution to the problem of understanding speech in challenging listening environments. The Table Microphone allows patients to hear more of a conversation using less effort, and also provides multiple functions such as a TV streamer and a body-worn remote microphone.

**Where to find it**

The Table Microphone is compatible with all Livio Edge AI, Livio AI and Livio products, styles and technology tiers.

Livio Edge AI	Livio AI	Livio
2400	2400 2000 1400 1200	2400 2000 1400 1200 1000
✓	✓ ✓ ✓ ✓	✓ ✓ ✓ ✓ ✓